



“WHAT’S UP”

A presentation of “what’s up” in the
night sky



This Month's Sky: June 2013

- **Our Solar System Tonight**
- **A Scorpion in the field**
- **Saturn Rules the Night Sky**
- **Jupiter Ditches the Graveyard Shift**
- **Pan-STARRS on the Pole**
- **Mercury Elongation**
- **Summer Solstice and the Reason for the Seasons**
- **Gee Whiz Question of the Month**
- **CE Observing Challenge**



Our Solar System Tonight

| | Rises | Sets |
|---------|------------|------------|
| Sun | 06:24 a.m. | 08:45 p.m. |
| Moon | 06:27 a.m. | 08:45 p.m. |
| Mercury | 08:03 a.m. | 10:34 p.m. |
| Venus | 07:42 a.m. | 10:11 p.m. |
| Mars | 05:39 a.m. | 07:47 p.m. |
| Jupiter | 07:00 a.m. | 09:18 p.m. |
| Saturn | 05:09 p.m. | 04:18 a.m. |
| Uranus | 02:59 a.m. | 03:25 p.m. |
| Neptune | 01:23 a.m. | 12:32 p.m. |
| Pluto | 10:03 a.m. | 08:20 a.m. |

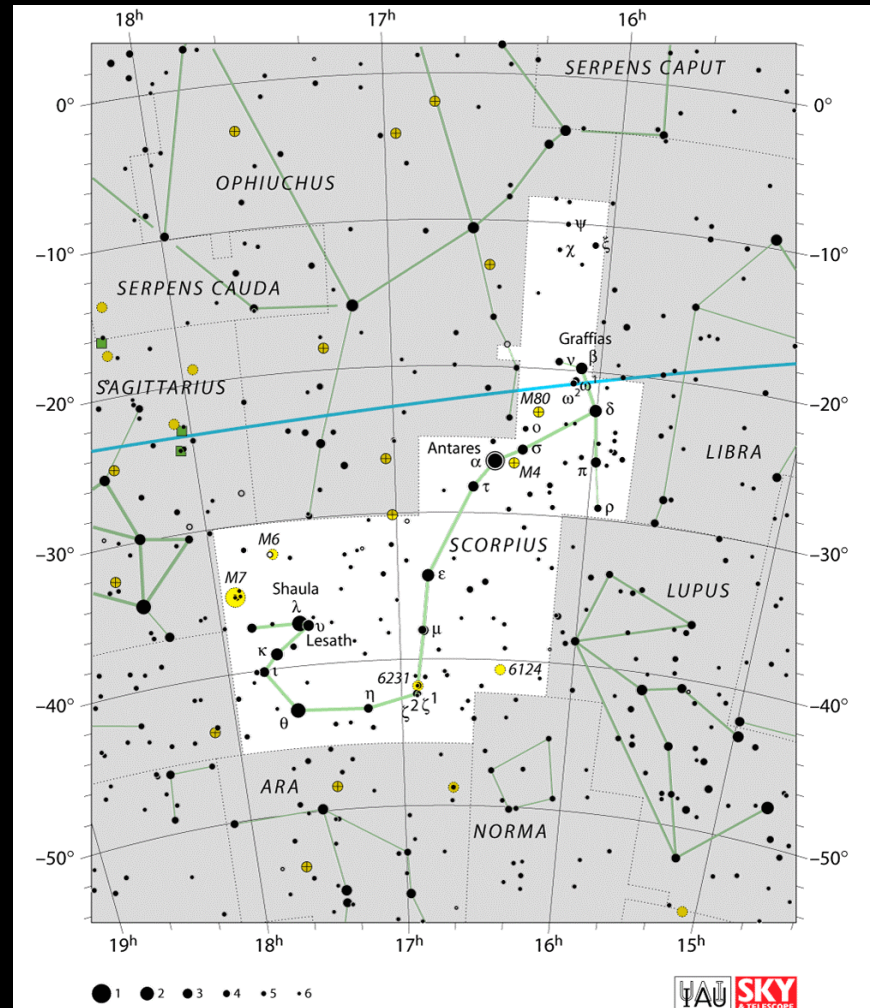


A Scorpion in the Field

Scorpius Deep Sky Objects
Visible Tonight...

(Be sure to ask for a sky map!)

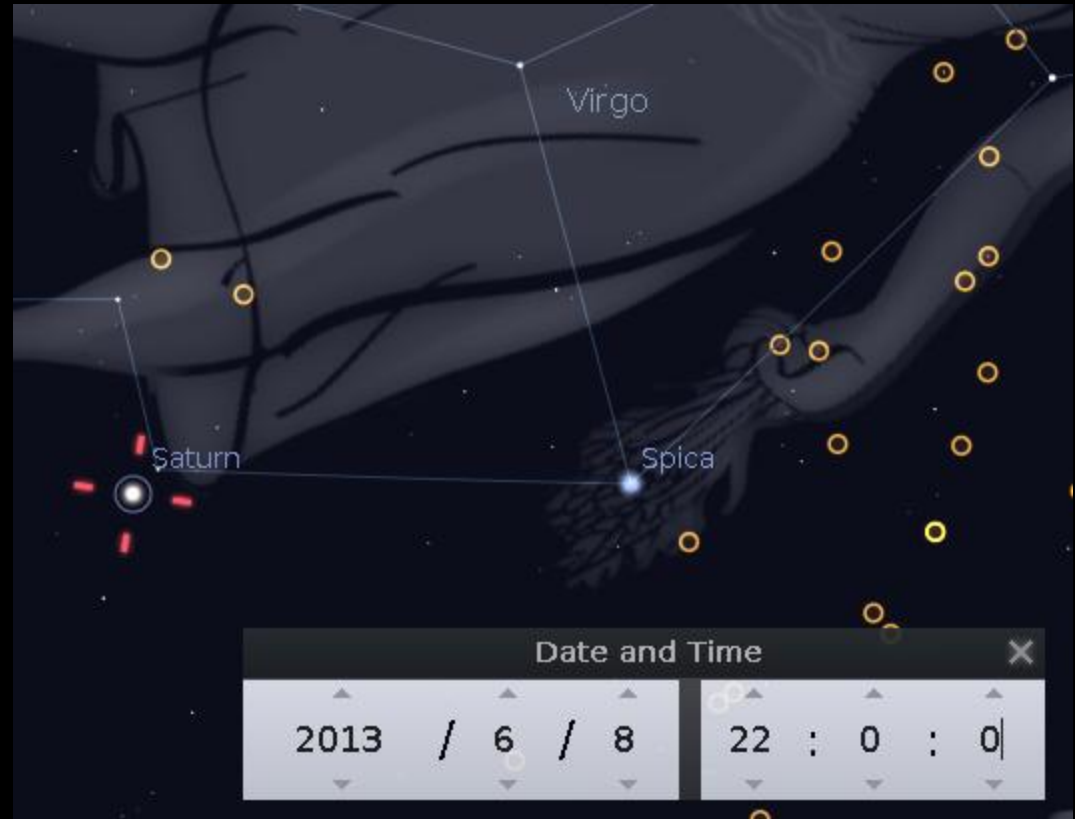
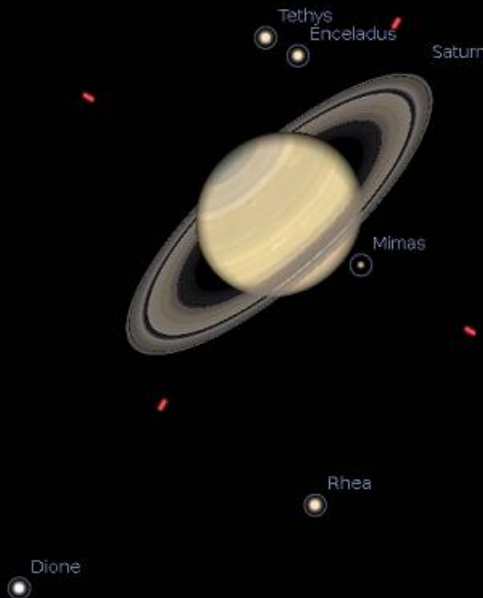
| Object | Description | Magnitude |
|----------|----------------------|-----------|
| Antares | Red Super Giant Star | 1.05 |
| M7 | Open Cluster | 3.3 |
| M4 | Globular Cluster | 5.9 |
| M80 | Globular Cluster | 2.6 |
| NGC 6231 | Open Cluster | 2.6 |
| NGC 6124 | Open Cluster | 5.8 |





Saturn Rules the Night Sky

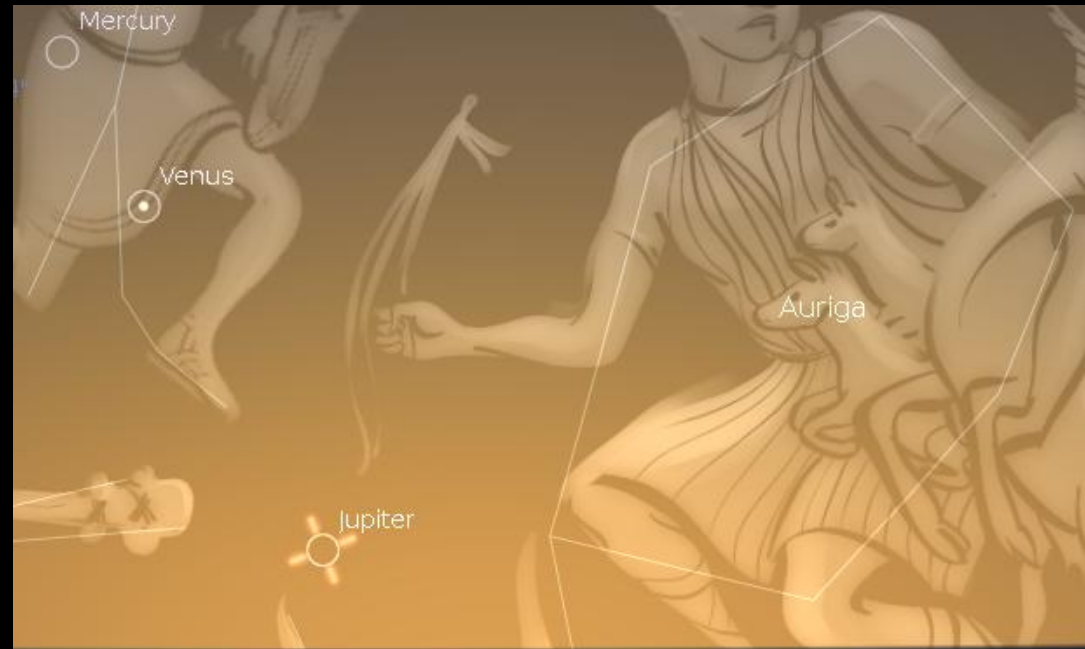
Magnitude: 0.59
RA: 14h 15m 33.5s
Dec: -10d 50' 20.7"
Rises: 05:09:33 p.m.
Sets: 04:18:03 a.m.
Opposition: 05/10/2014
02:15:36 p.m.
336 Days away





Jupiter Ditches the Graveyard Shift

Magnitude: -1.45
RA: 05h 42m 12.9s
Dec: +23d 07' 44.7"
Rises: 07:09:06 a.m.
Sets: 09:18:26 a.m.
Opposition: 01/05/2014
04:01:25 p.m.
211 Days Away



Date and Time ✕

| | | | | | | | | | | |
|------|---|---|---|---|---|----|---|---|---|---|
| 2013 | / | 6 | / | 8 | : | 21 | : | 0 | : | 0 |
|------|---|---|---|---|---|----|---|---|---|---|

Europa
Ganymede



Pan-STARRS on the Pole

Magnitude: 9.89
RA: 15h 21m 52s
Dec: +80d 13' 57.3"
Rises: circumpolar
Sets: circumpolar

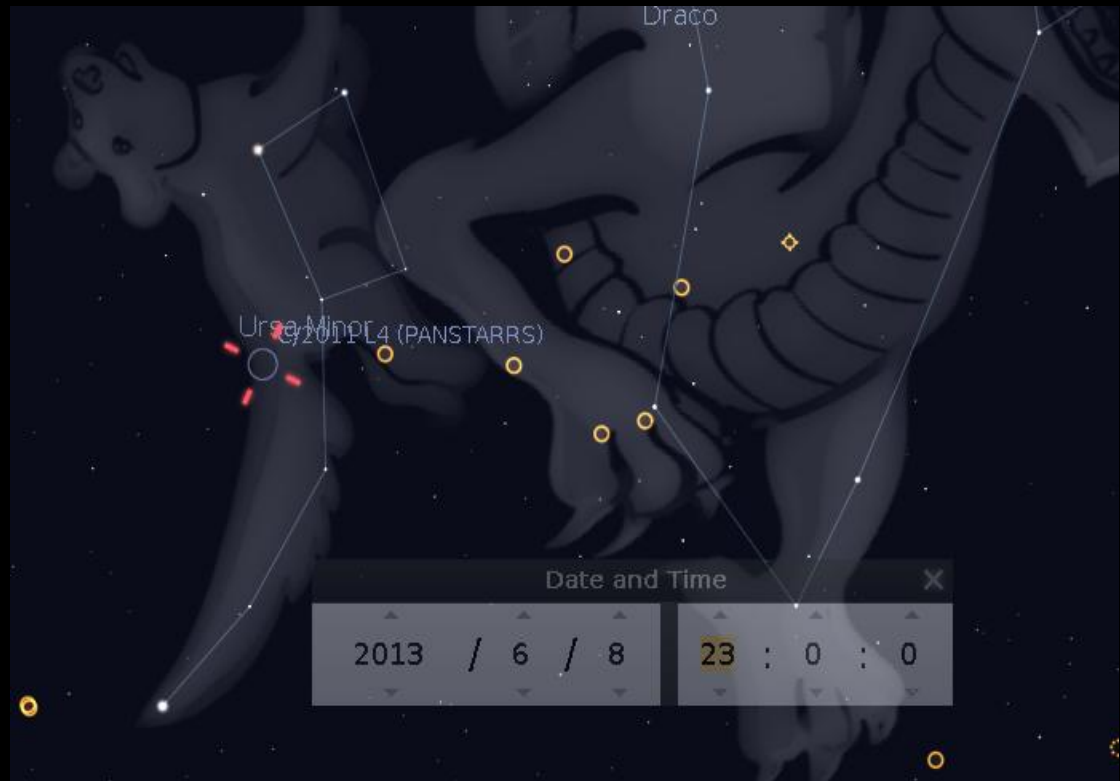
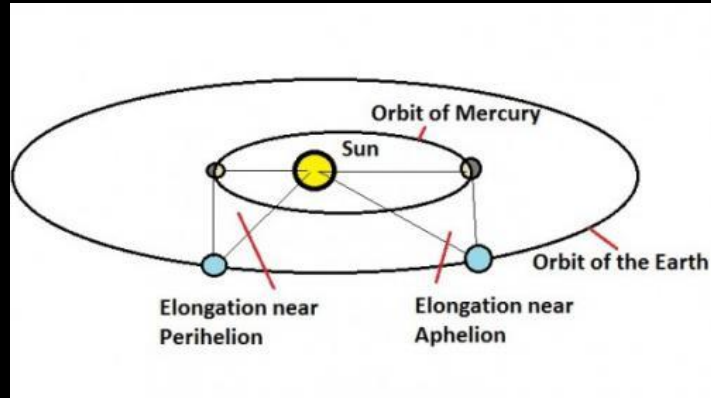


Image Credit David Eagle



Mercury Elongation

On June 12, 2013, the planet Mercury will be at its furthest angle from the Sun, known as greatest elongation. It will be at its highest point in the night sky after sunset. This is the best time to try to view Mercury since it stays so close to the Sun and doesn't usually climb very high above the horizon.

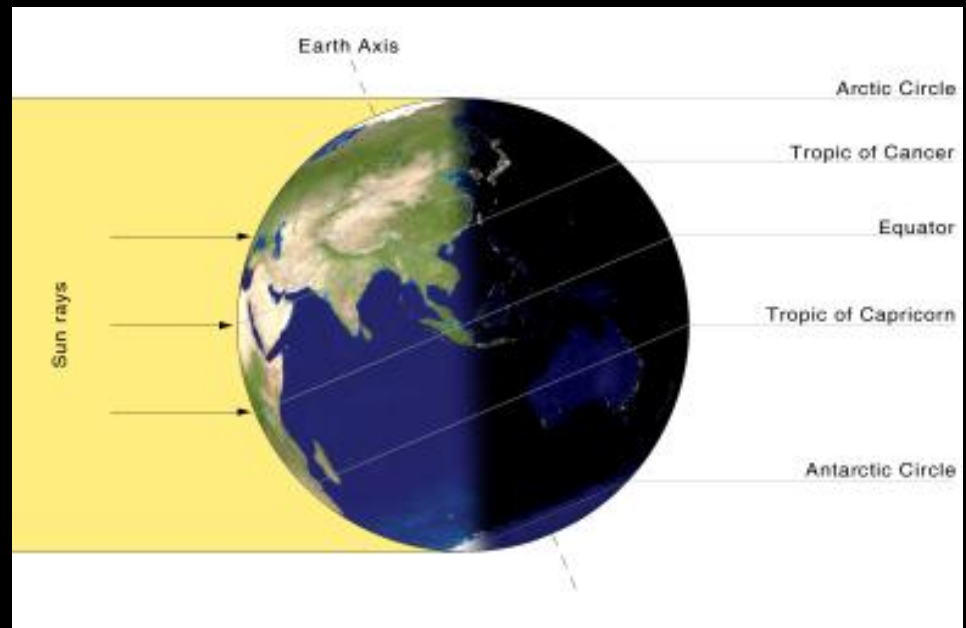




The Summer Solstice

(and the reason for the seasons)

The Summer Solstice occurs on June 21, 2013 at 05:04 UTC. The North Pole of the earth will be tilted toward the Sun, which will have reached its northernmost position in the sky and will be directly over the Tropic of Cancer at 23.44 degrees north latitude. This is the first day of Summer (Summer Solstice) in the Northern Hemisphere and the first day of Winter (Winter Solstice) in the Southern Hemisphere.





Charlie Elliott Chapter of the Atlanta Astronomy Club

Gee Whiz Question of the Month

How many rings does the planet Uranus have?



Charlie Elliott Chapter of the Atlanta Astronomy Club

Gee Whiz Question of the Month

Eleven!

Factoid: A season last 21 years on Uranus. Each pole has 42 years of sunlight followed by 42 years of darkness.



CE Observing Challenge

Cor Caroli

- Variable Double Star in Canes Venatici
- Variable Magnitude 2.85 to 2.95
- Period: 5.47 Days
- Right Ascension (6/8/2013 22:00): 12h 56m 1.6s
- Declination (6/8/2013 22:00): 38° 19' 6.8"
- Azimuth (6/8/2013 22:00): 302.37 Degrees
- Altitude (6/8/2013 22:00): 81.12 Degrees

ENJOY!!



Useful Websites

- Stellarium for Windows
- Mobile Planetarium for Android
- SkySafari for Android
- <http://www.skyandtelescope.com>
- <http://www.sciensational.com/astronomy.html>

