



Morgan Cline June 2013



“WHAT’S UP”

A presentation of “what’s up” in the
night sky



This Month's Sky: August 2013

- **Our Solar System Tonight**
- **Perseids Meteor Shower**
- **Neptune at Opposition**
- **Saturn's Double Shadow**
- **The Moon's Wall**
- **I SEE ISON**
- **Gee Whiz Question of the Month**
- **CE Observing Challenge**



Our Solar System Tonight

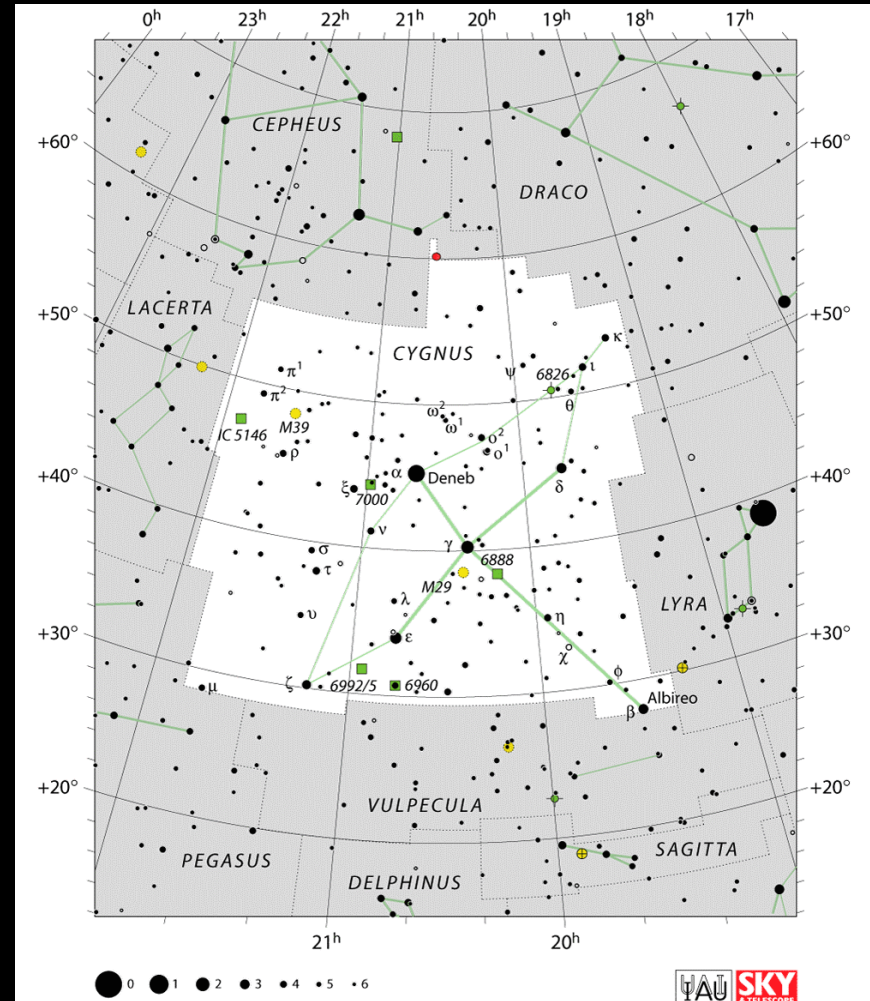
	Rises	Sets
Sun	06:54 a.m.	08:25 p.m.
Moon	10:24 a.m.	10:23 p.m.
Mercury	5:43 a.m.	7:42 p.m.
Venus	9:40 a.m.	10:05 p.m.
Mars	4:31 a.m.	6:47 p.m.
Jupiter	3:54 a.m.	6:08 p.m.
Saturn	1:02 p.m.	12:09 a.m.
Uranus	10:49 p.m.	11:18 a.m.
Neptune	9:08 p.m.	8:19 a.m.
Pluto	5:49 p.m.	4:06 a.m.



Cygnus Over Charlie Elliott

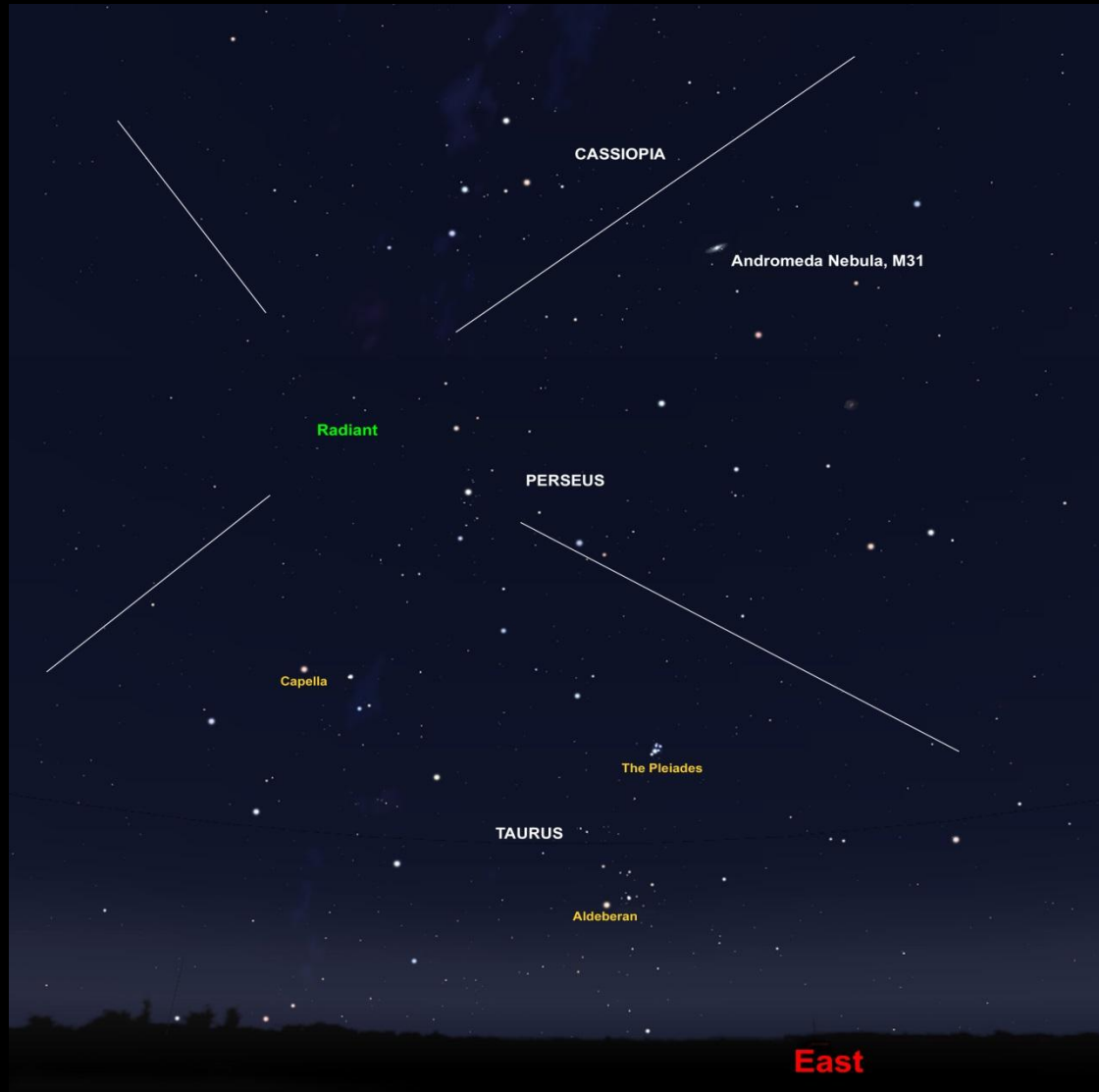
Cygnus Deep Sky Objects
Visible Tonight...
(Be sure to ask for a sky map!)

Object	Description	Magnitude
Alberio	Binary Star	5.1 & 3.1
M29	Open Cluster	6.6
M39	Open Cluster	4.6
M22	Globular Cluster	5.1
M27	Planetary Nebula	7.1
IC 5146	Nebula (Cocoon)	7.2
NGC 7000	Nebula (N. American)	4
NGC 6960	Nebula (W. Veil)	5
NGC 6992/5	Nebula (E. Veil)	5





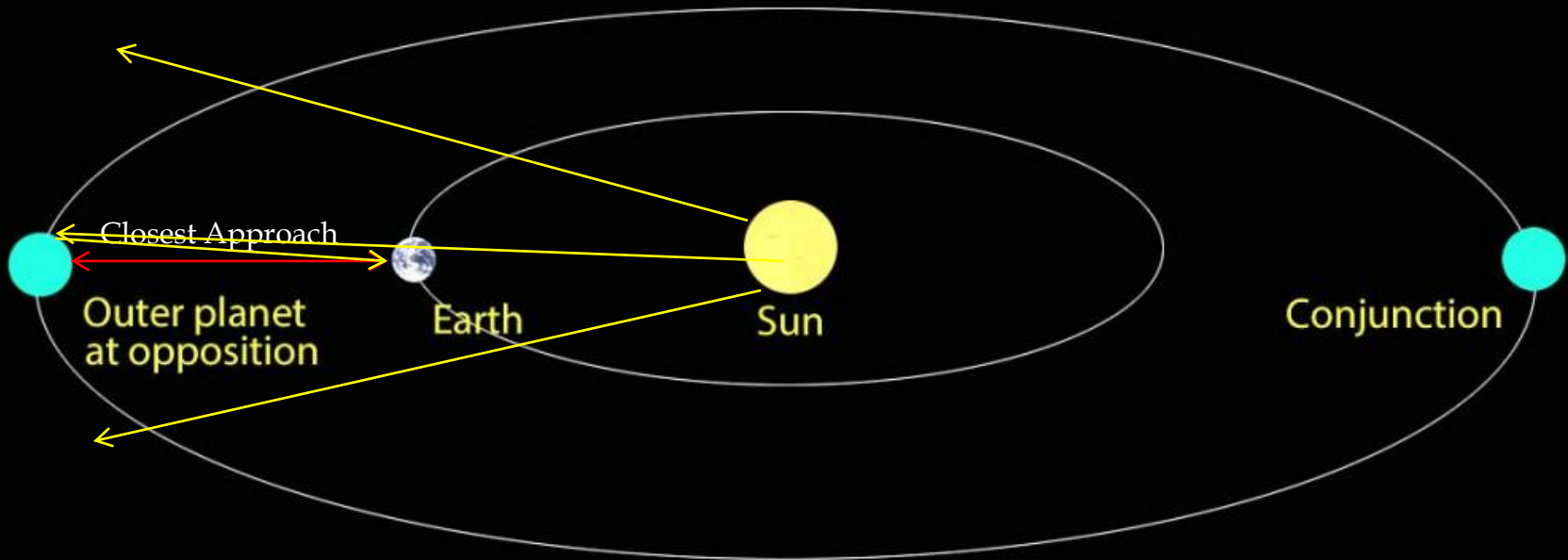
Perseid Meteor Shower!





Neptune at Opposition

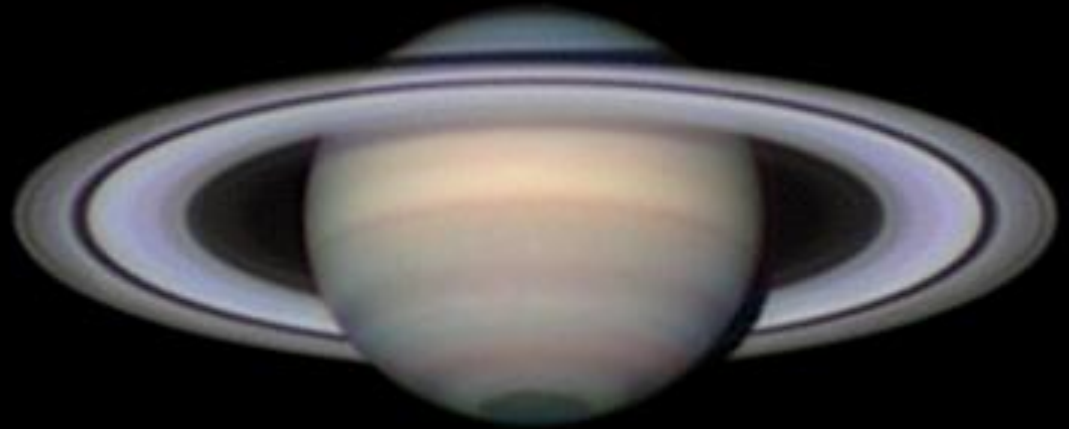
What does this mean?





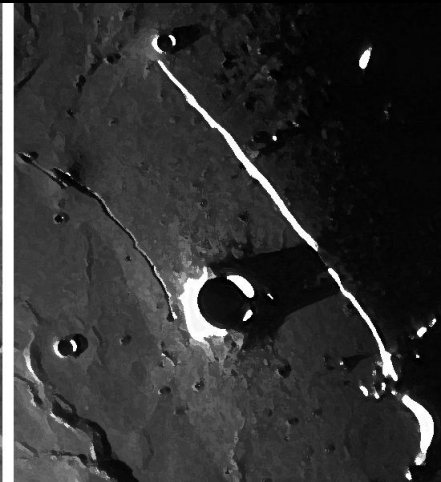
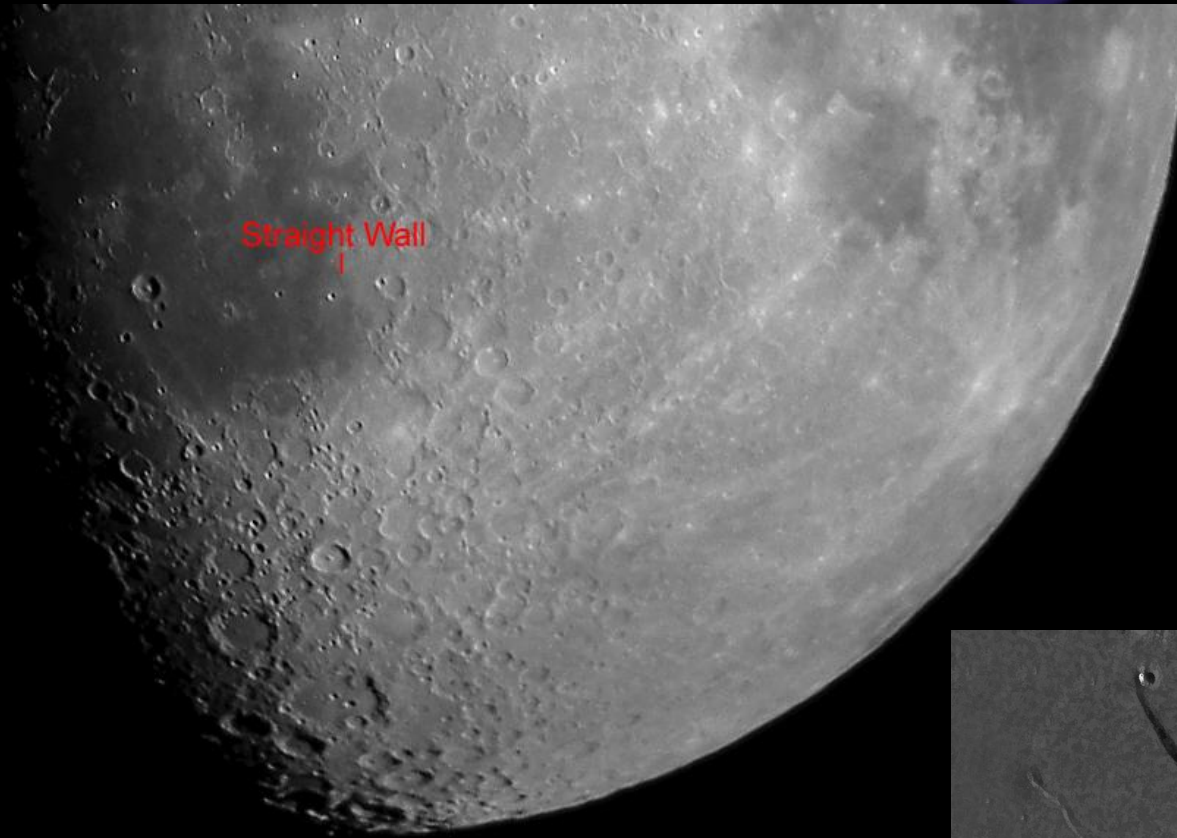
Saturn has a Double Shadow?

Saturn is 90° of the Sun. This causes the globe of the planet to cast a shadow onto the rings behind the globe. This angle also causes the rings to cast a shadow onto the globe. Saturn sets near midnight this month so make sure you get out early to try and spot this double shadow!





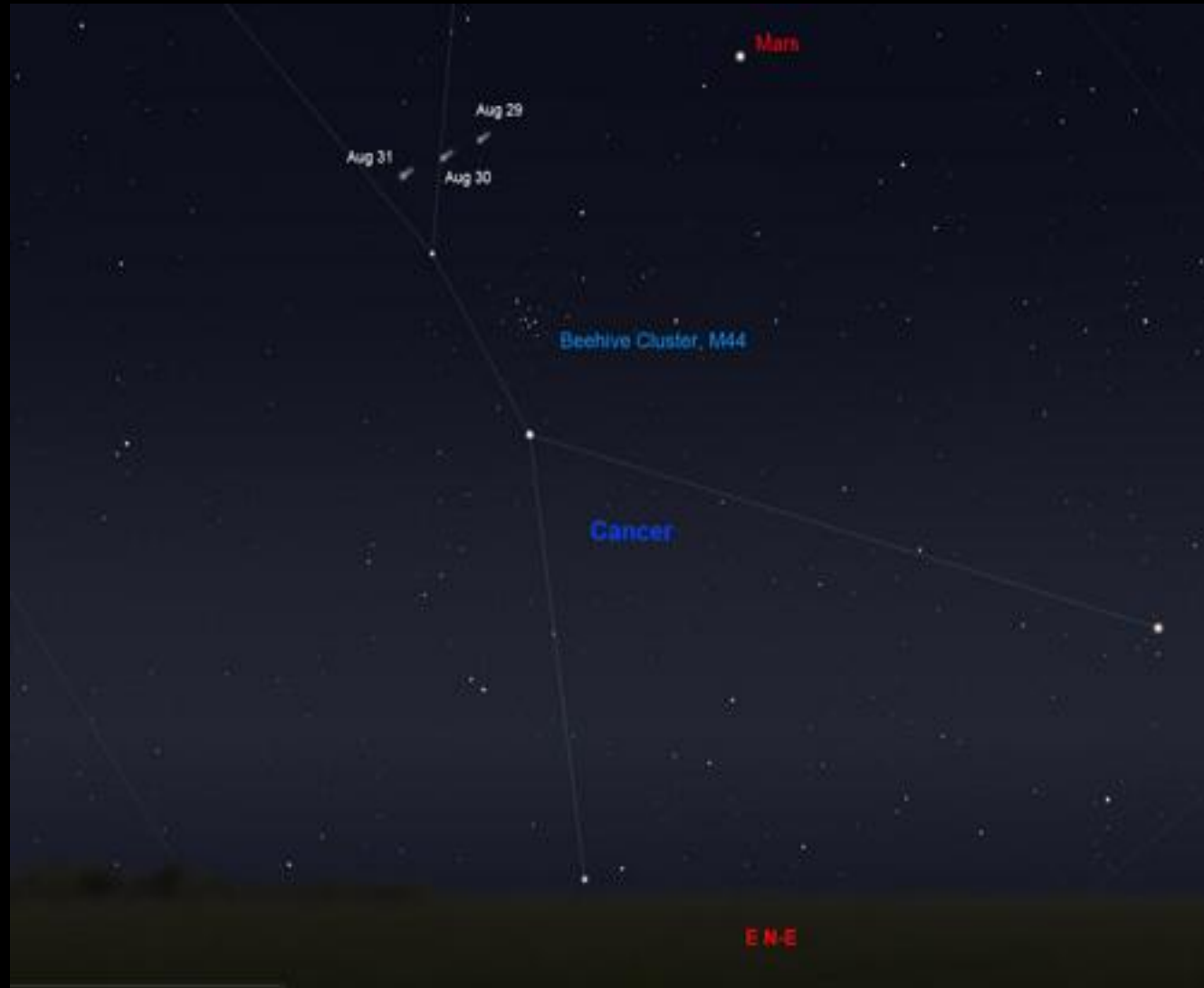
The Lunar "Straight Wall"





ISON Comes Into View

At the end of the month with a telescope of 6" or greater, it may be possible to spot comet ISON which will then have a predicted magnitude of +12. On the 31st, it will lie just a couple of degrees above the Beehive Cluster, M44, in Cancer. Keep in mind that Comets are extremely unpredictable and it may not make it past the Sun.





Gee Whiz Question of the Month

Neutron stars are so dense that just a teaspoon of just one star would be equal to the weight of the how much of Earth's population?



Gee Whiz Question of the Month

All of it!



CE Observing Challenge

NGC 40
Caldwell 2

- Planetary Nebula in Cepheus
- Magnitude 10.6
- Right Ascension: 00h 13m 48.42s
- Declination: 72° 35' 56.9"

ENJOY!!



September Meeting

- **Next Meeting: 9/7/2013 6:00 p.m.**
- **Potluck!**



Useful Websites

- Stellarium for Windows
- SkySafari for Android
- <http://www.skyandtelescope.com>
- <http://www.jodrellbank.manchester.ac.uk/astronomy/nightsky/#highlights>
- <http://www.almanac.com/astronomy>



Morgan Cline June 2013